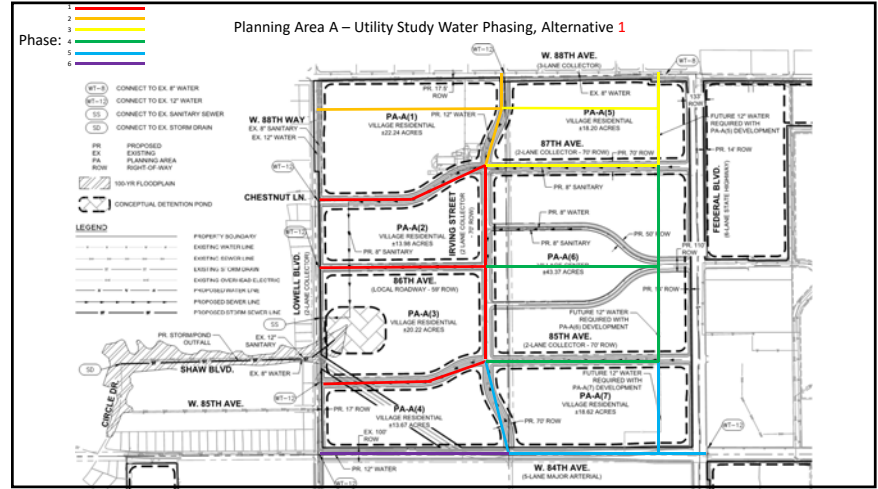
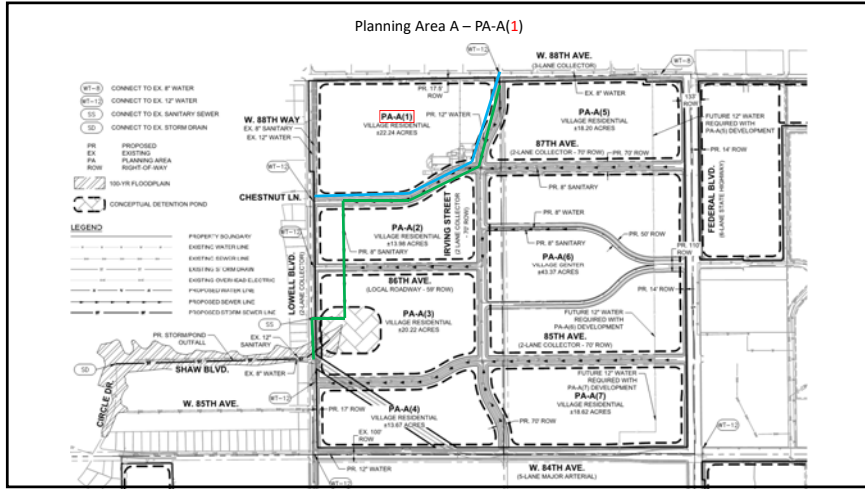
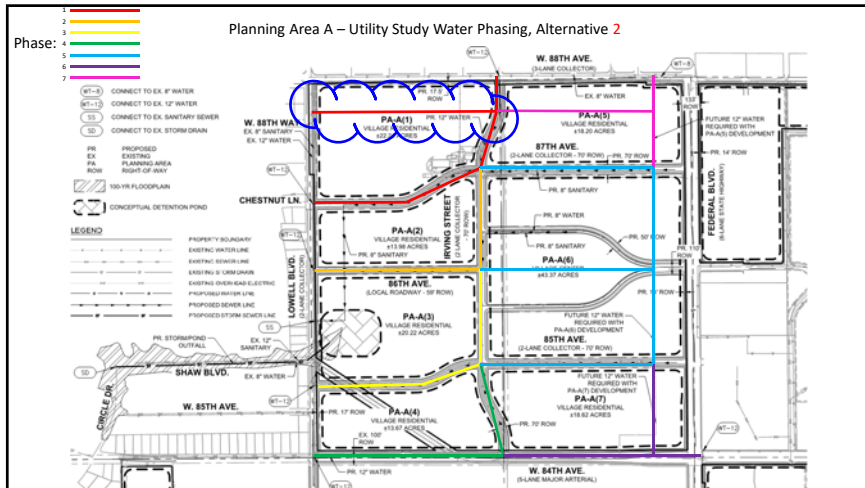


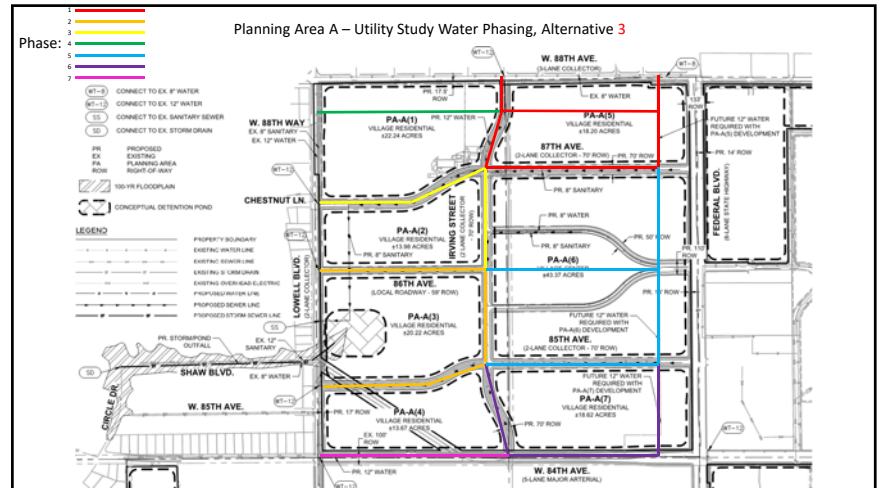
Alternative-1 serving PA-A(1): Phases 1 & 2



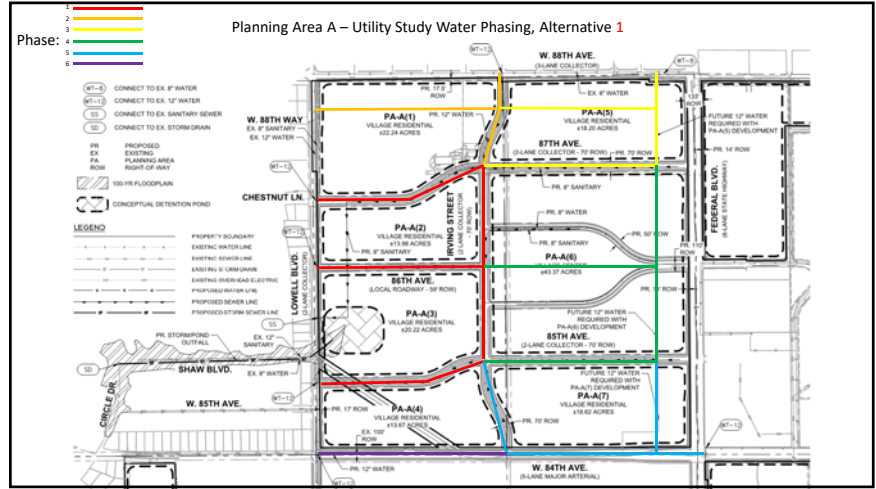
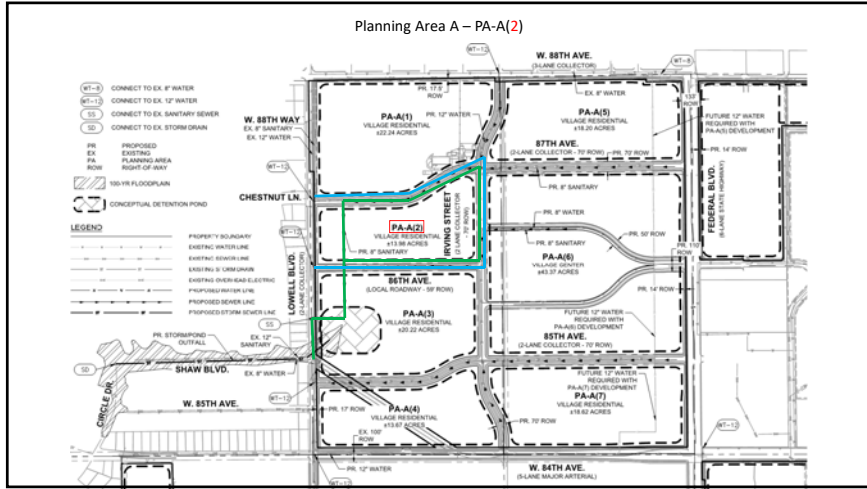
Alternative-2 serving PA-A(1): Phase 1 only
But 12" E-W main not shown in PDP/ODP



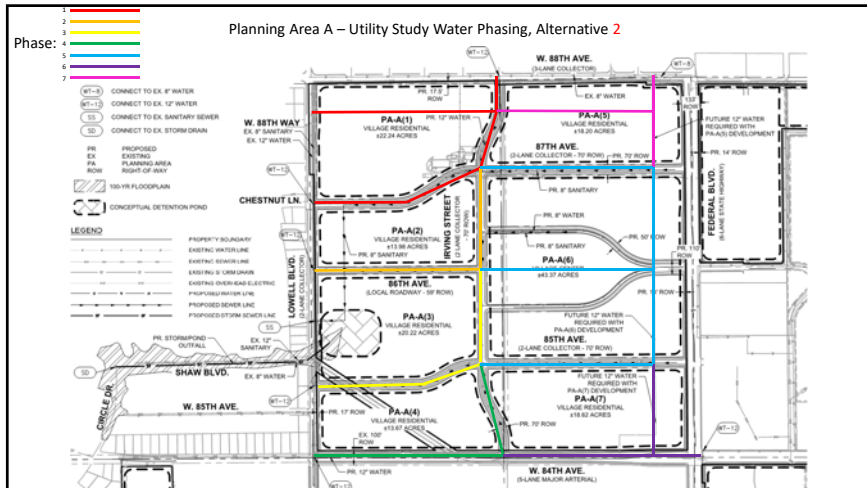
Alternative-3 serving PA-A(1): Phases 1, 3 & 4
To prevent dead-ends: Phase 2



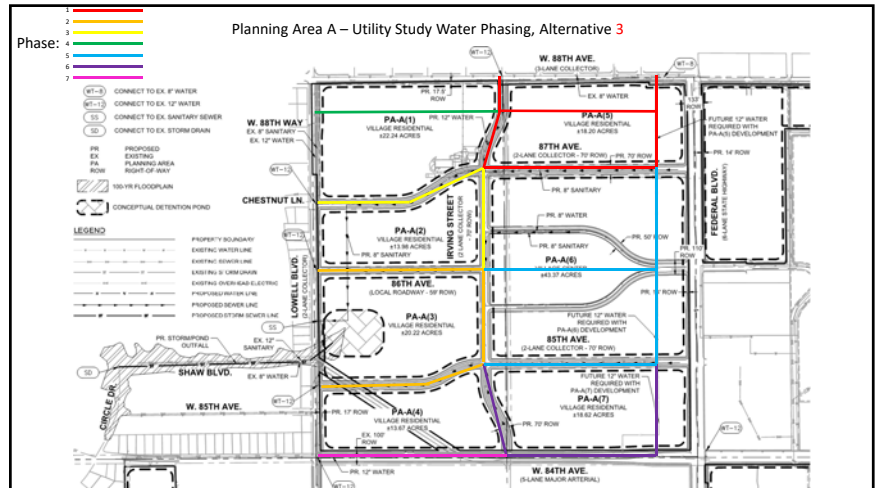
Alternative-1 serving PA-A(2): Phase 1 only



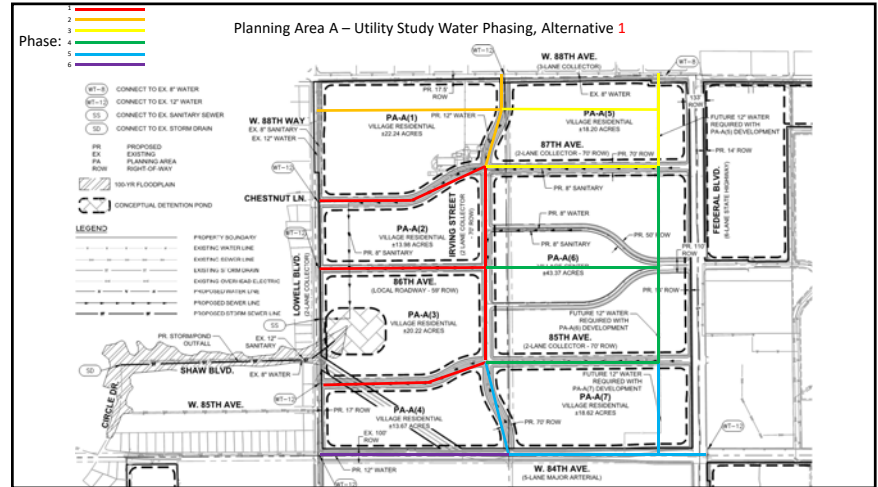
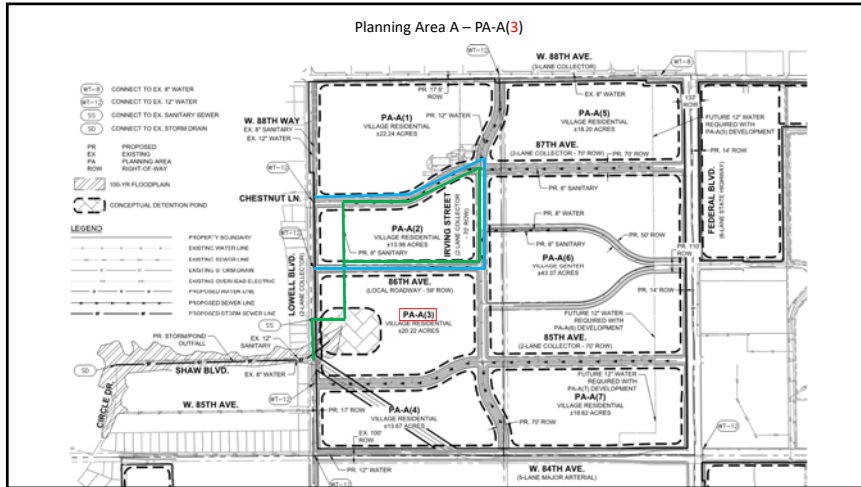
Alternative-2 serving PA-A(2): Phases 1 & 2



Alternative-3 serving PA-A(2): Phases 2 & 3

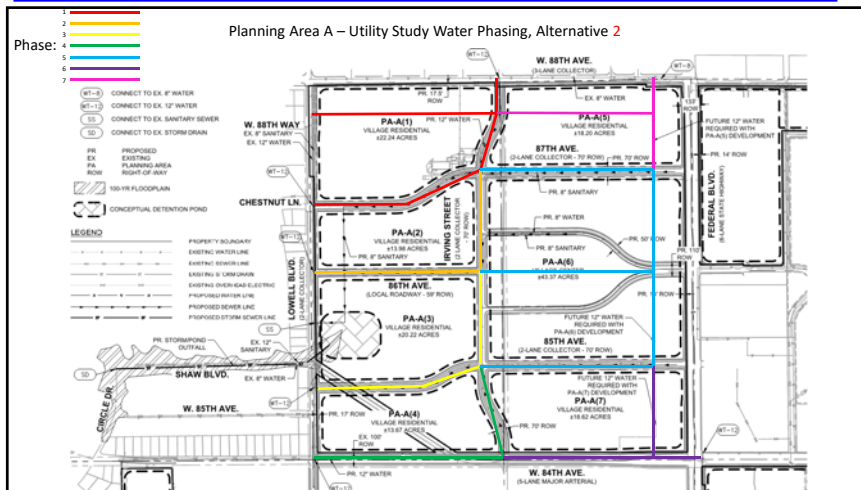


Alternative-1 serving PA-A(3): Phase 1 only

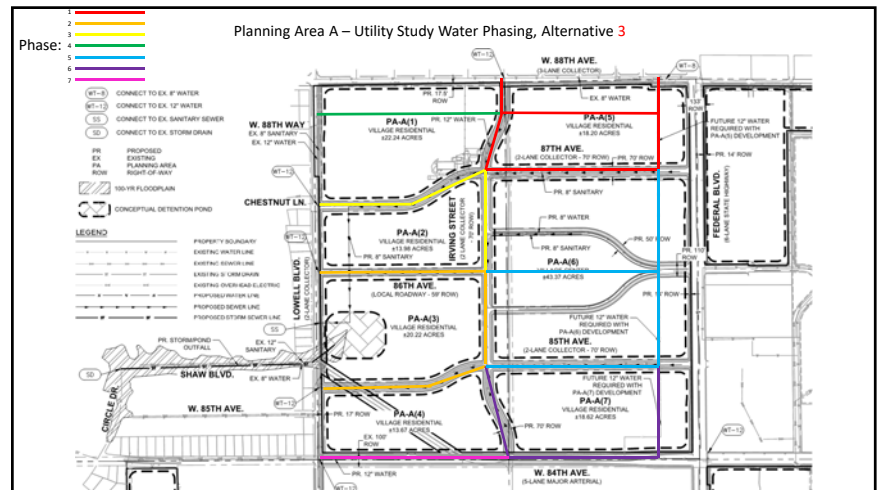


The 4th submitted PDP & 1st submitted ODP-Parcel A used the same water & sanitary design for PA-A(3) as was proposed for PA-A(2), which cannot be valid. Analysis here assumes water mains surround only PA-A(3).

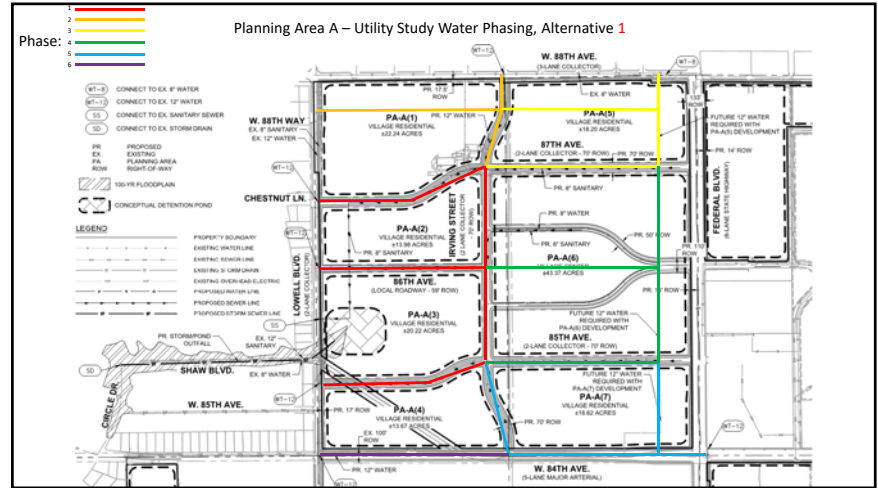
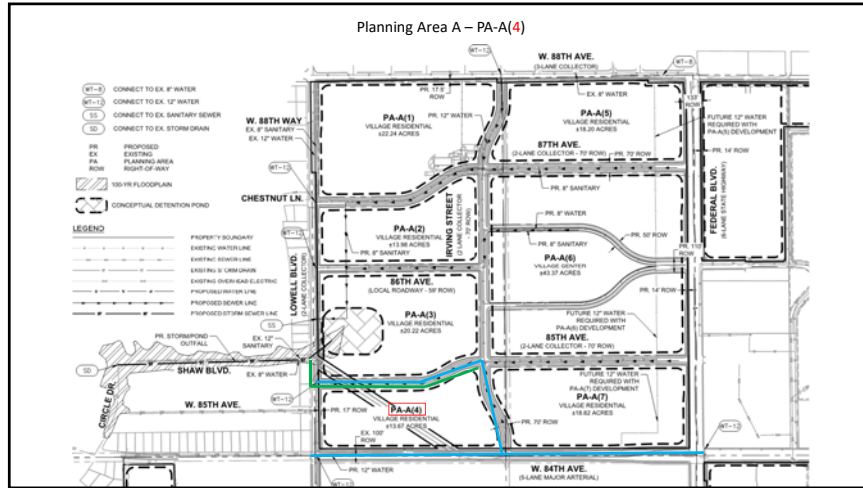
Alternative-2 serving PA-A(3): Phases 2 & 3
To prevent dead-ends: Phase 1



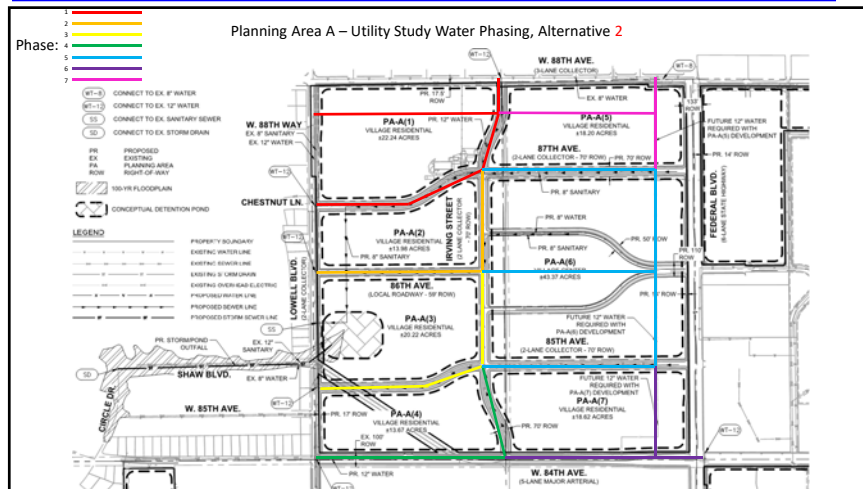
Alternative-3 serving PA-A(3): Phase 2 only



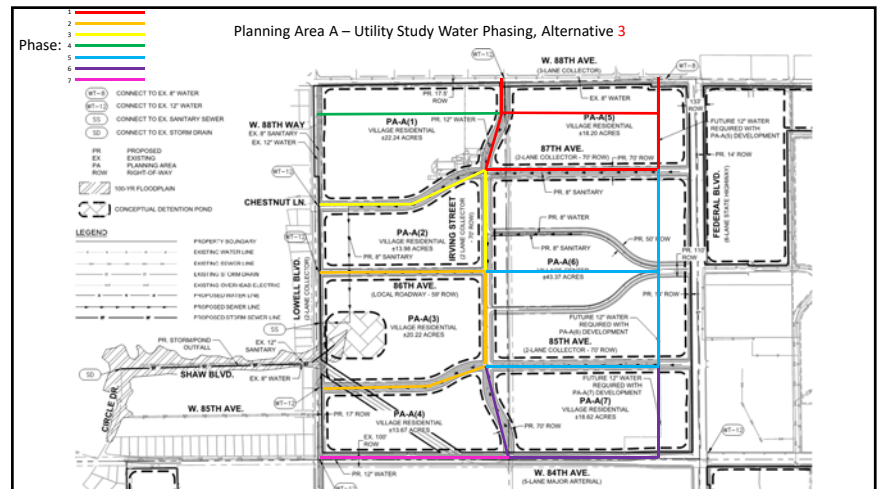
Alternative-1 serving PA-A(4): Phases 1, 5 & 6
To prevent dead-ends: Phases 2, 3, 4 & 7



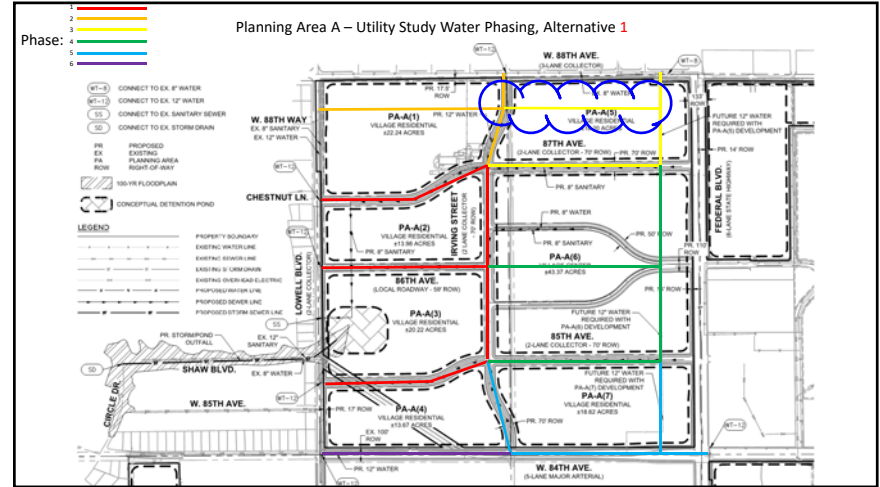
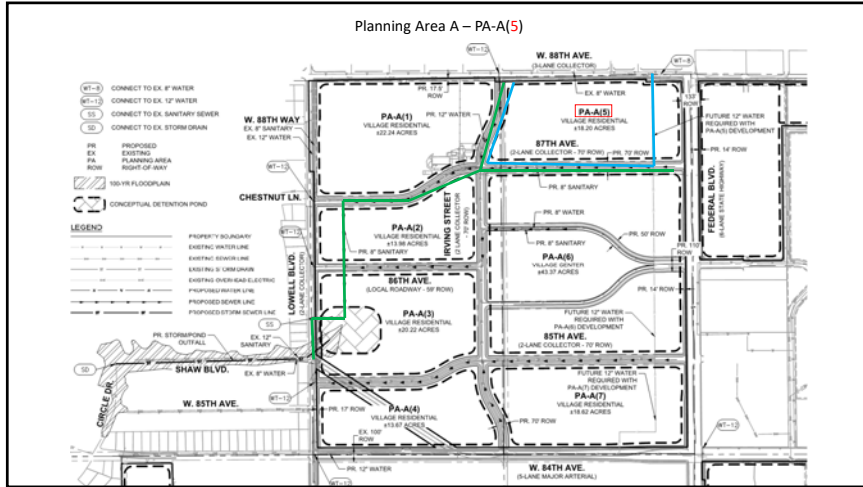
Alternative-2 serving PA-A(4): Phases 3 & 4
To prevent dead-ends: Phases 1 & 2



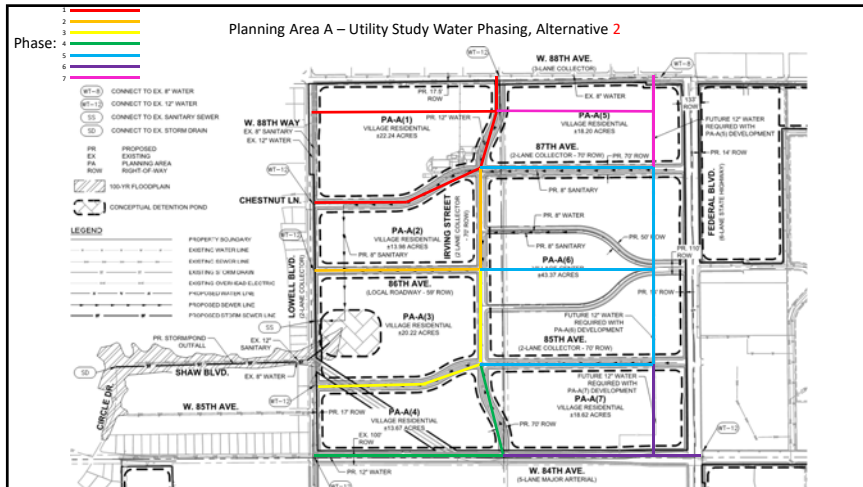
Alternative-3 serving PA-A(4): Phases 2, 6 & 7
To prevent dead-ends: Phases 1 & 5



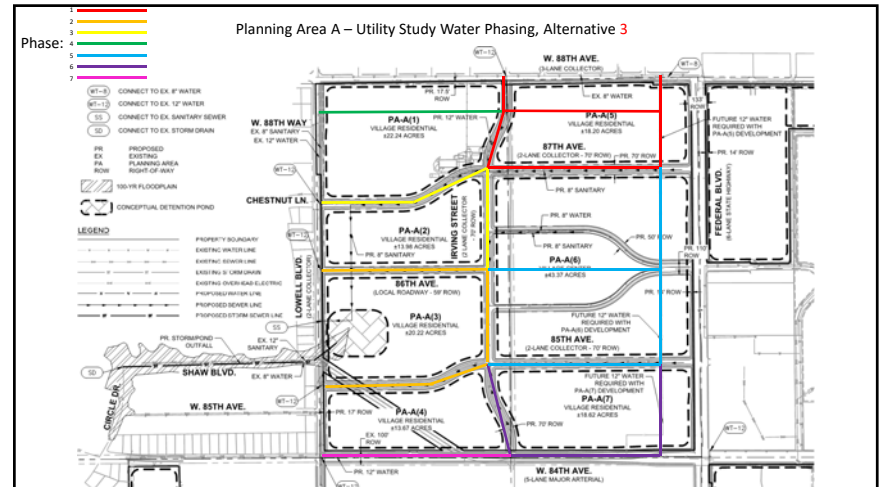
Alternative-1 serving PA-A(5): Phases 2 & 3
But 12" E-W main not shown in PDP/ODP



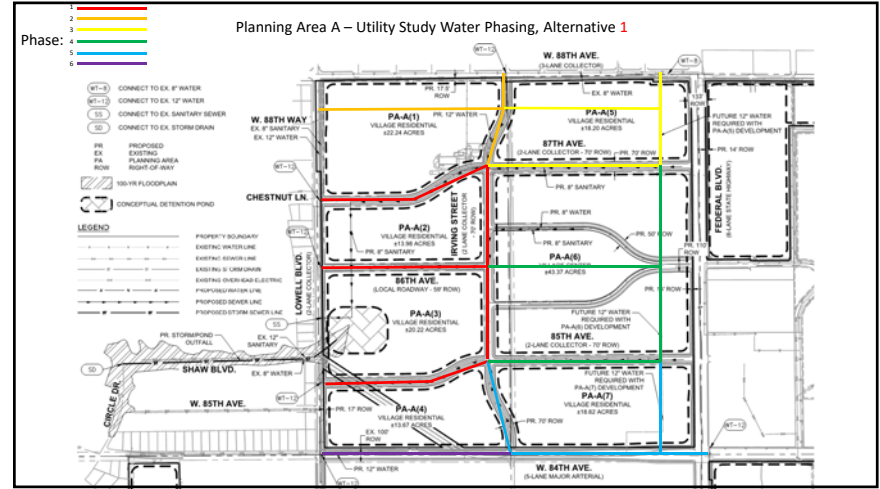
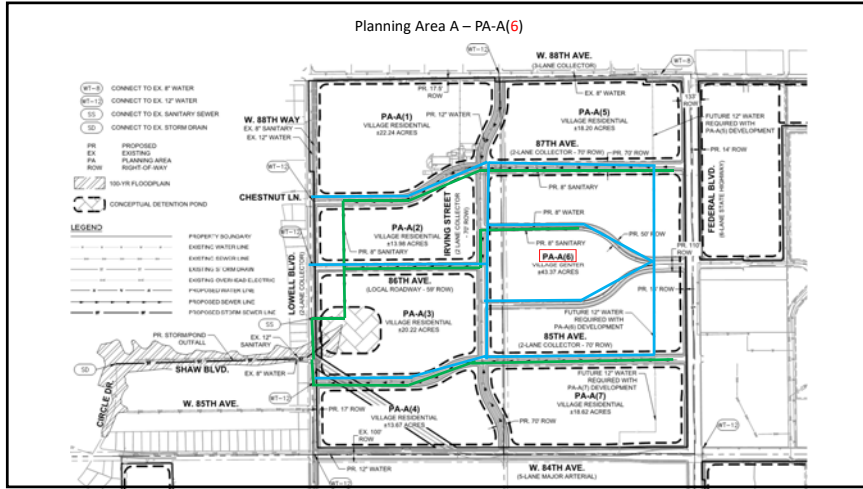
Alternative-2 serving PA-A(5): Phases 1, 5 & 7
To prevent dead-ends: Phases 2 & 3



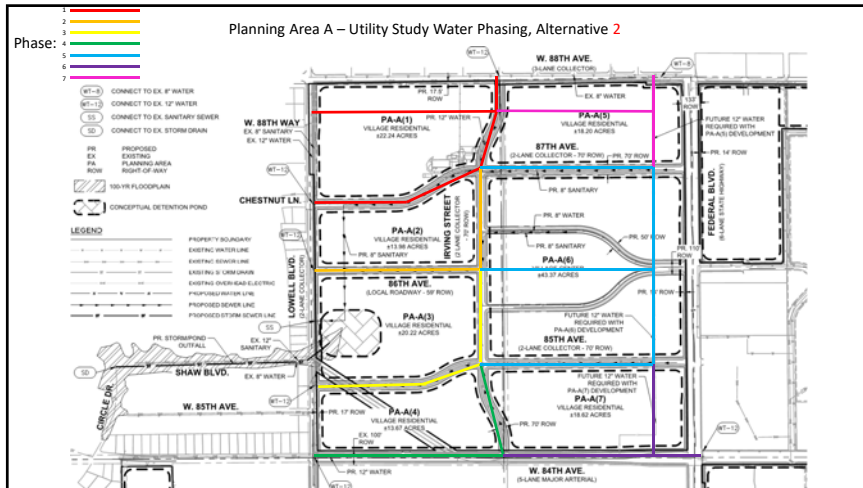
Alternative-3 serving PA-A(5): Phase 1 only



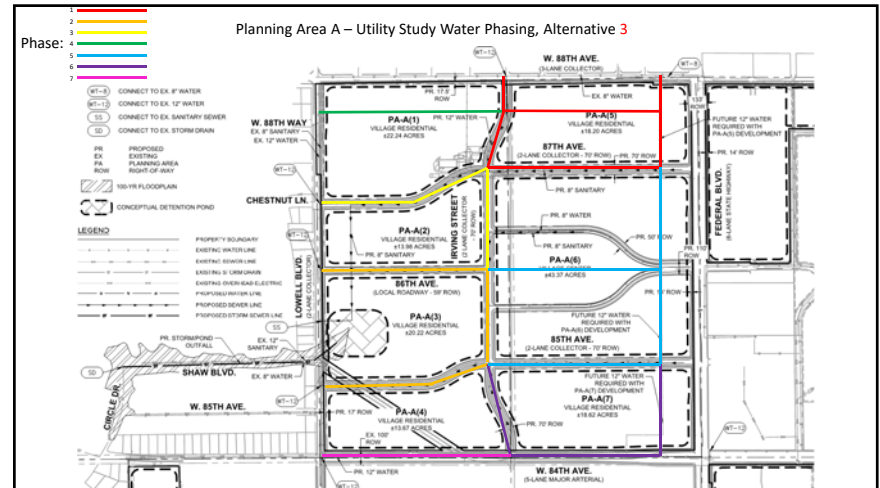
Alternative-1 serving PA-A(6): Phases 1, 3, 4
To prevent dead-ends: Phase 2



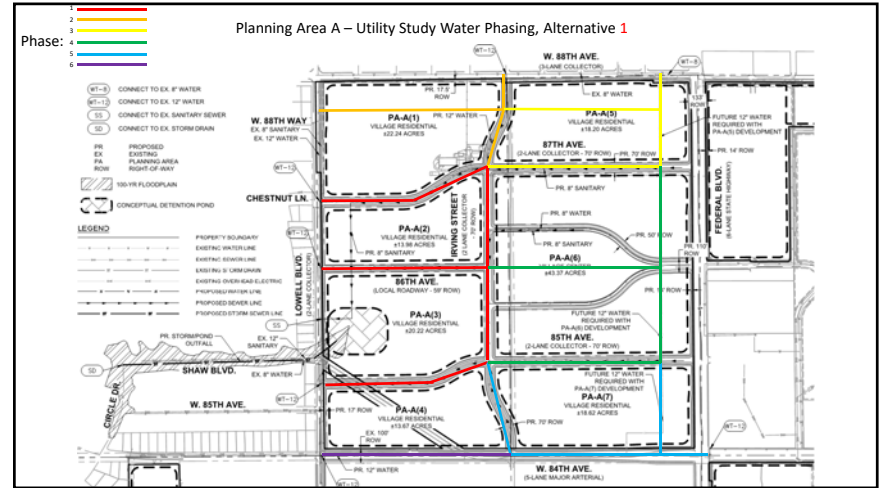
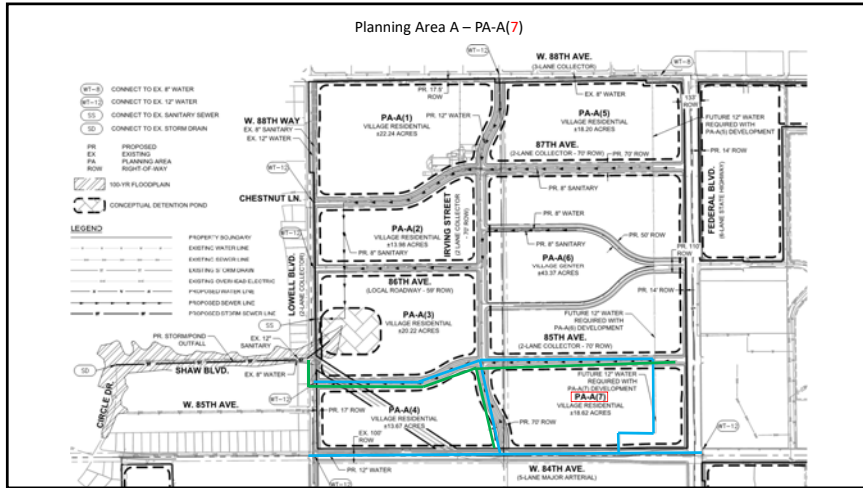
Alternative-2 serving PA-A(6): Phases 2, 3 & 5
To prevent dead-ends: Phase 1



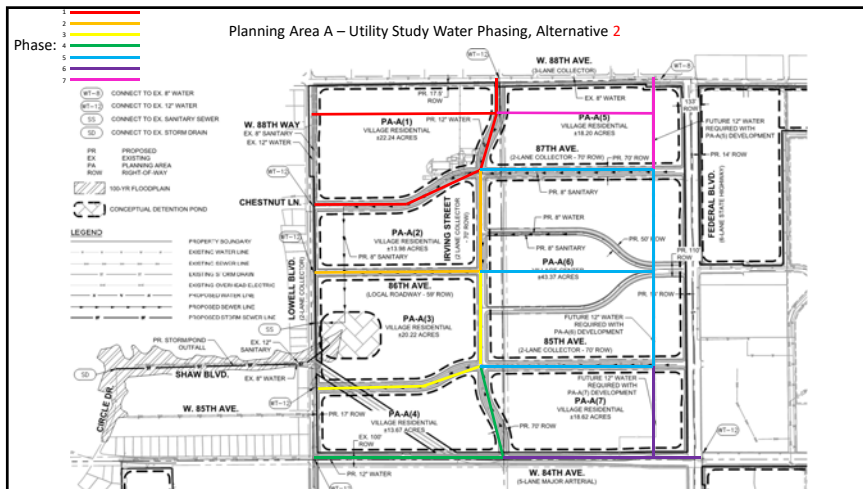
Alternative-3 serving PA-A(6): Phases 1, 2, 3 & 5



Alternative-1 serving PA-A(7): Phases 4 & 5
To prevent dead-ends: Phases 1, 2, 3



Alternative-2 serving PA-A(7): Phases 4, 5 & 6
To prevent dead-ends: Phases 1 & 2 or 3



Alternative-3 serving PA-A(7): Phases 5 & 6
To prevent dead-ends: Phases 1 & 2 or 3

